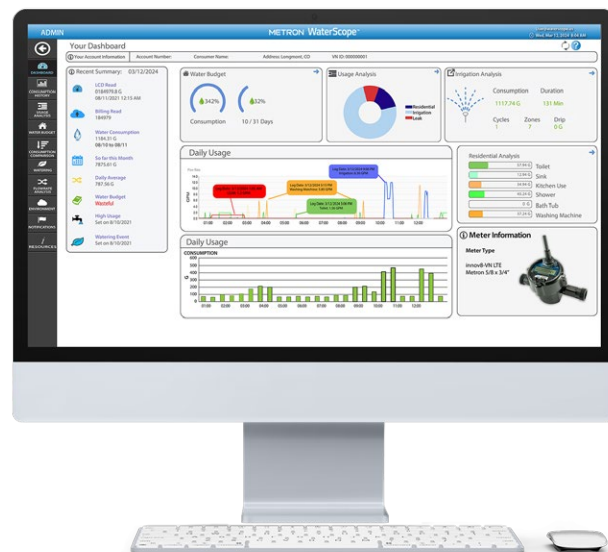


## WaterScope®

### Water Usage Reporting and Analytics

With hundreds of thousands of meters capturing water usage data every minute, that's a lot of data going up to the secure cloud. The WaterScope Suite is your set of tools for understanding it, whether you're a homeowner setting up leak alerts for peace of mind or a water utility staying on top of billing for your entire customer base. With advanced analytics and rules-based reporting, WaterScope turns information into action, simplifying the business of water.



## The WaterScope Suite

### METRON WaterScope® CLASSIC

Designed for meter management, system status and billing integration, the industry favorite WaterScope Classic offers a deep dive into the usage data of every meter in your district. Ideal for utilities, park managers and more.

### METRON WaterScope® PLUS

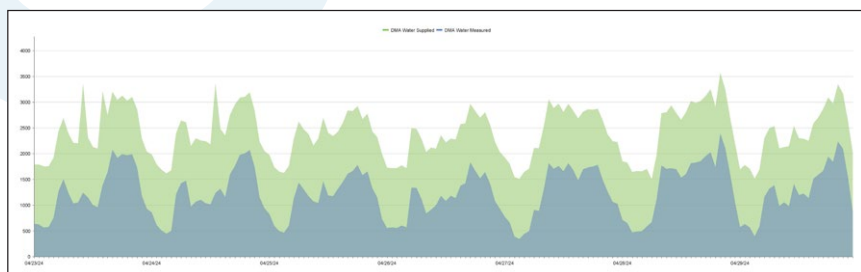
Water data turned into business intelligence. WaterScope PLUS is a sophisticated dashboard for property and portfolio managers, providing intuitive data on financial and operational performance.

### METRON WaterScope® UTILITY

Designed to make your field techs more productive, the WaterScope Utility app for iOS and Android allows them to identify meters with issues, see a route map, capture serial numbers when repairing or replacing meters, update GPS coordinates, and much more.

### METRON WaterScope® DATALINK

We've built an API to allow application developers to access the power of WaterScope's database and analytic tools. With deep integration like this, the sky's the limit for billing, property management and ESG applications.



Analysing infrastructure water losses



## Utilities

Powered by Microsoft® Azure, WaterScope is reliable, highly-available and scalable. Its powerful analytics and reporting features give you the tools to run your water business efficiently, with as much insight into where the water goes as you need

Here are a few examples of what WaterScope can do for you:

- Capture accurate usage data for every customer
- Generate billing data easily
- Identify leaks in your infrastructure
- Identify meters that aren't reading over cellular
- Find water being used at properties marked as unoccupied
- Identify residents flouting watering restrictions
- Identify residents with the most serious leaks
- Analyze usage trends, such as seasonal



## Mobile Home Parks & Multi-Family

Managers of mobile home parks and multi-family properties can use WaterScope in conjunction with submetering to get accurate water usage information. Instead of RUBS, which isn't permitted in all states, you can bill your tenants for exactly the amount of water they use.

Benefits are:

- Fair and accurate water bills
- Leak detection per unit or building
- Infrastructure leak detection
- Easy to understand
- Easy billing systems integration
- Easy Rent Manager integration

For property owners and investors, WaterScope PLUS provides at-a-glance metrics across an entire portfolio of properties, so you can see which parks are performing best regarding water loss reduction and recapture rates.



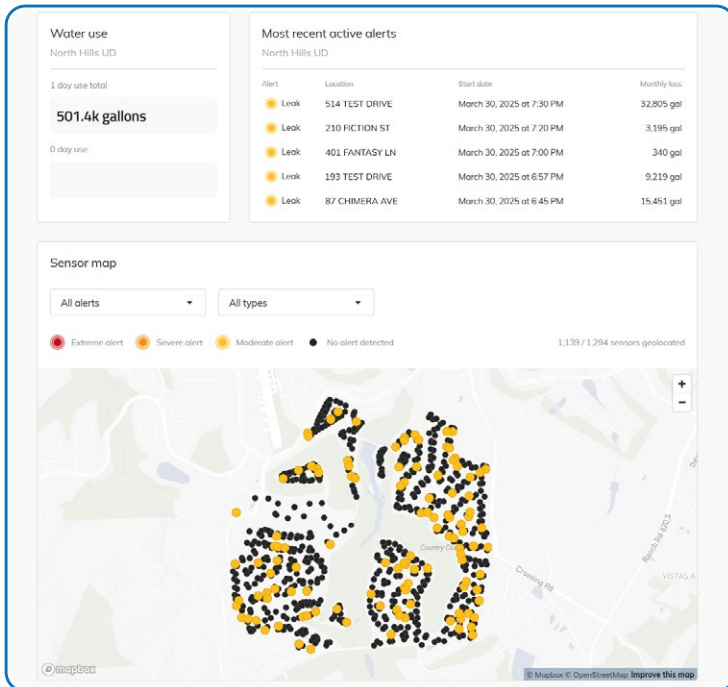
## Commercial, Education, etc.

Metron's water metering is great for commercial units, schools, colleges, hospitals, senior living communities and more. WaterScope provides everything you need to know for all aspects of water management for these facilities.

With WaterScope, you can:

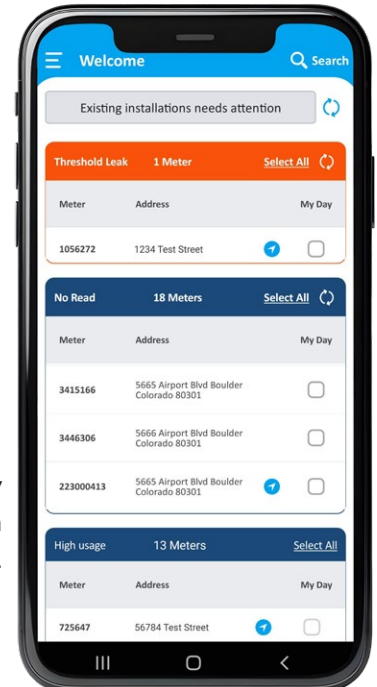
- See your water usage accurately
- Identify non-sewer-return water
- Bill tenants
- Reduce water losses
- Implement water conservation

Metron's metering solutions are scalable from the smallest commercial unit to the largest factories, and WaterScope scales right along.



**WaterScope PLUS** turns water data into business intelligence.

**WaterScope Utility** streamlines installation and maintenance tasks.



- Learn more on our website: [metron-us.com](https://metron-us.com)
- Call 303.449.8833 to speak to a member of our sales team, or email us at: [hello@metron-us.com](mailto:hello@metron-us.com)

