



# Water Management Solutions



## Everything You'll Need

Metron has it all: meters, registers, robust cellular AML, an advanced Water Data Management System, field apps, monitoring services and best-in-class customer support. From metro utilities to regional and community associations, you can trust Metron for your water management needs.

## One-Minute Data

Metron's technology gathers usage data every 60 seconds. This best-in-class data granularity enables you and your customers to more fully understand how water is being used – or wasted. Identifying and fixing leaks and understanding just how much water irrigation uses leads to reduced consumption and costs.

## Streamlined Billing

Metron's software works seamlessly to compile water usage data and present it in an easily understood format for both you and your customers. Flexible integration from our software platform, WaterScope®, to all major billing systems allows data to flow freely. Imagine no more costly manual meter reads that can introduce errors.

## Reduced Maintenance

Metron's 35+ years of experience in the water industry has enabled us to engineer the highest quality, most reliable and durable meters available. With Metron you'll get more consistent reads, you'll repair or replace far fewer meters, and you'll dramatically reduce system maintenance costs.

The WaterScope® web portal lets utilities, property managers and individual consumers see water consumption data and more.



Metron's Customer Support team uses WaterScope to identify and fix issues.



The WaterScope Utility and consumer apps for iOS and Android put water data and actions in the palm of your hand.



Metron's team of water experts offer WaterMasters™ water-monitoring service.



Prism™ registers transmit accumulated water data to cellular network towers once per night

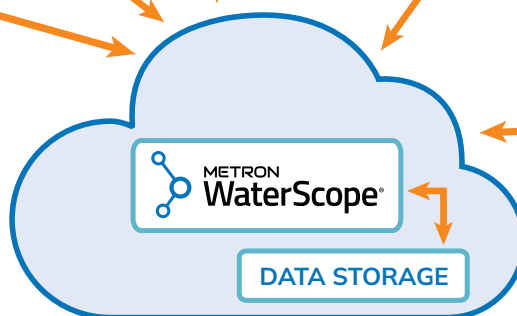
**METRON  
Prism**



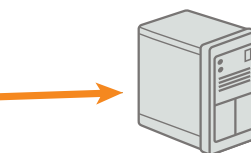
Leak detections are transmitted immediately.



All communications are sent through a Virtual Private Network (VPN) for security.



Secure Internet



Metron's WaterScope DataLink API enables custom utility applications such as billing interfaces and account management tools.

Metron's WaterScope server processes all incoming and outgoing data in a secure cloud.

# Water Meters

Metron's extensive range of residential and commercial water meters covers everything from the smallest residences to the largest industrial plants, providing long-lasting accuracy and reliable AMI reads over the existing cellular network. No more manual reads, no more expensive infrastructure deployments: if you've got cellular coverage, you've got water data for the entire day, every day.

Metron offers a wide family of proven single-jet meters (Spectrum™ Jet), from half-inch to eight inch, plus ultrasonic (Spectrum Wave) and positive displacement (Spectrum PD) options. For the largest capacities, Metron's proportional flow meters (Spectrum Enduro) are ideal for industrial and fire service applications. We also offer a GPS-trackable hydrant meter (Spectrum Hydrant) for construction applications.

Full product list and specifications at [metron-us.com/meters](https://metron-us.com/meters)

## METRON Spectrum WAVE

Residential  
ultrasonic  
meters

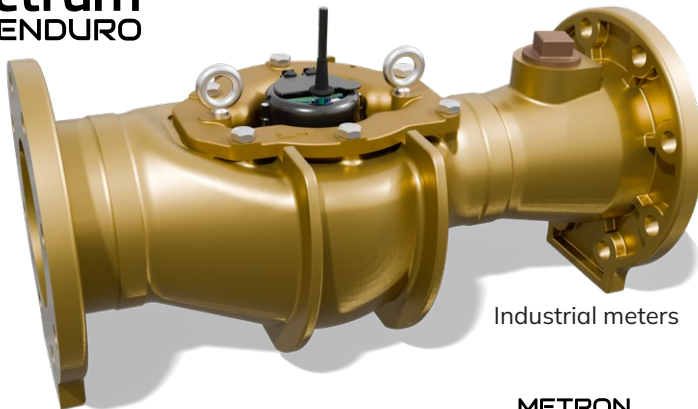


## METRON Spectrum PD

Residential  
piston meters



## METRON Spectrum ENDURO



Industrial meters

## METRON Spectrum HYDRANT



## METRON Spectrum ENDURO FSA



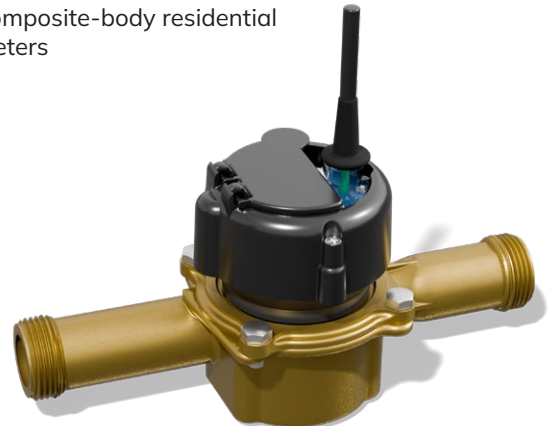
Fire service  
assembly

## METRON Spectrum JET

Single-jet meters for residential  
and commercial applications



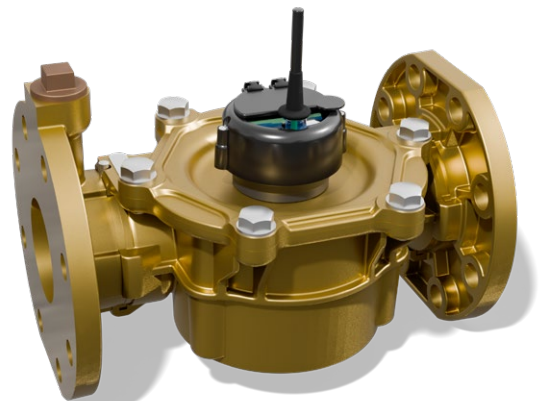
Composite-body residential  
meters



Brass-body residential meters



Small commercial or zone meters



Large commercial or zone meters



## Water Usage Reporting, Analytics and Billing

With Metron's smart meters deployed across your district in residential, commercial, industrial and educational applications, the WaterScope Suite gives you the tools for understanding and acting on your customers' water usage.

Get accurate and detailed daily reports on leaks, high usage, zero usage, unauthorized usage, infrastructure losses, freeze alerts, and more. Easy integration with any billing system means on-time billing that reflects actual water use.

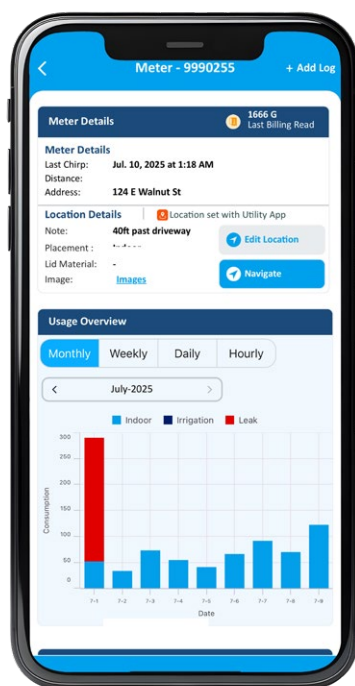
WaterScope turns information into action, simplifying the business of water.

- Capture accurate usage data for every customer
- Generate billing data easily
- Identify leaks in your infrastructure
- Find water being used at properties marked as unoccupied
- Identify residents flouting watering restrictions
- Identify properties with the most serious leaks
- Track costs and conservation efforts
- Analyze usage trends, such as seasonal



### Consumers

Utilities can provide customers with individual logins to WaterScope Classic or WaterScope PLUS, allowing them to track their own water usage. This empowers customers to conserve water, sends leak alerts, and improves customer relations.



### METRON WaterScope® UTILITY

#### Empowering Installation and Maintenance Teams

Our **WaterScope Utility** app for iOS and Android streamlines your field teams' activities by allowing you to easily create and assign work orders directly from reports of, for example, leaks or missed reads. Technicians can use WaterScope Utility when installing and repairing Metron meters, with step-by-step procedures, including taking photographs and capturing GPS locations. Newly installed meters or registers are updated instantly in WaterScope, eliminating paperwork.

### METRON WaterScope® PLUS

#### Water data turned into business intelligence

WaterScope PLUS is a sophisticated dashboard for property and portfolio managers, providing intuitive data on financial and operational performance.

### METRON WaterScope® DATALINK

#### Deep Data Integration

WaterScope's API provides seamless and sophisticated data flow to billing applications, data analysis platforms, and more. The sky's the limit.

Learn more: [metron-us.com/waterscope](https://metron-us.com/waterscope)

# Registers and Retrofits

The Prism™ register captures water flow rate data every single minute of every day. That's 1,440 data points every 24 hours. With that level of detail, it's possible to identify short-lived events such as toilet flushes and showers. No other vendor's meter system offers this level of insight into water usage.

24 hours' worth of minute-by-minute data is uploaded in the middle of the night to the local cellular tower, after which the data is immediately viewable in WaterScope. If a Prism register is configured to provide emergency alerts, it will send a transmission immediately a leak is identified. Prism registers are pre-configured to connect automatically to nationwide cellular networks, depending on coverage at the deployment location. Cellular connectivity means you'll have no manual reads and no drive-bys. With 20 years of typical battery life, Metron's Prism register is reliable, durable and accurate.

Learn more: [metron-us.com/registers/](https://metron-us.com/registers/)

**METRON  
Prism**



## Got legacy water meters?

### Adapter Rings

For many meters, the Prism can replace the legacy register using a simple adapter ring. Almost any meter that uses a rotating magnetic coupling to a top-mounted register can benefit. We have adapter rings for a wide range of meters, allowing you to turn them into cellular smart meters in a couple of minutes. Get all the benefits of Metron's AMI solution and the power of WaterScope, all without replacing the meters that are in the ground or interrupting supply.



### Prism R

Prism R connects to existing registers that provide a 3-wire output, adding cellular AMI functionality without disturbing the existing meter or register.



**METRON  
Prism R**

Visit our website: [metron-us.com](https://metron-us.com)

Call 303.449.8833 to speak to a member of our sales team,  
or email us at: [hello@metron-us.com](mailto:hello@metron-us.com)

